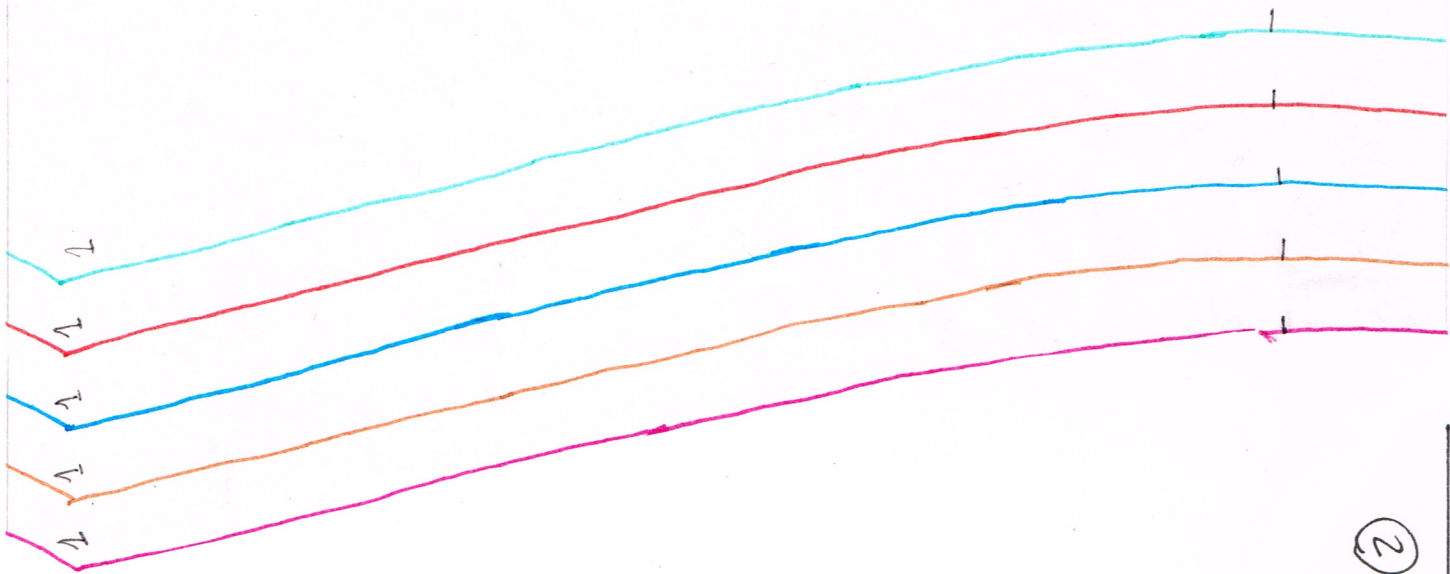
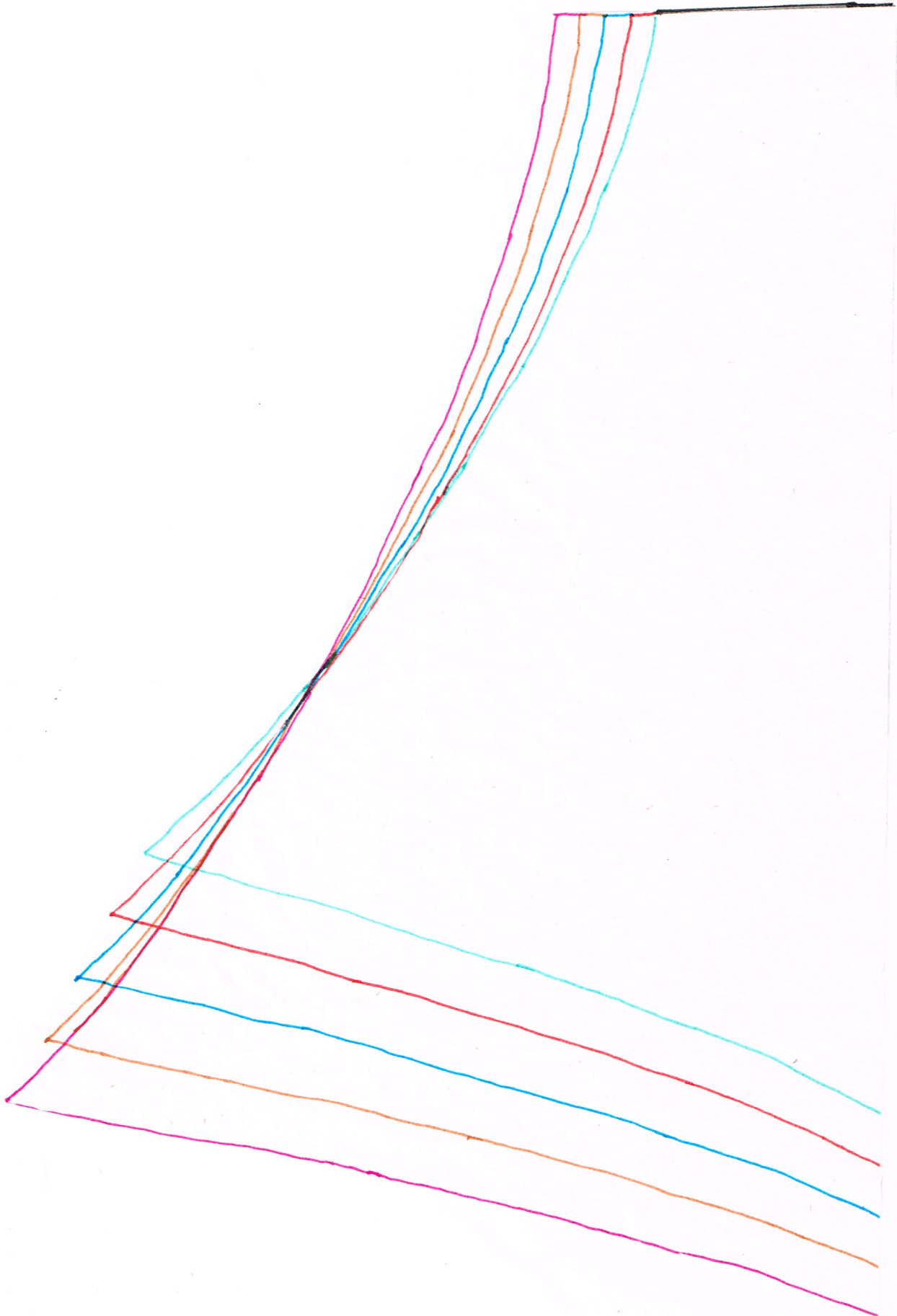


⚠ patron devant  
sans le nid  
d'abeilles  
→ si vous voulez  
faire les croisillons  
nid d'abeilles →  
ajoutez 8,5 cm →  
pour la plume du  
tissu

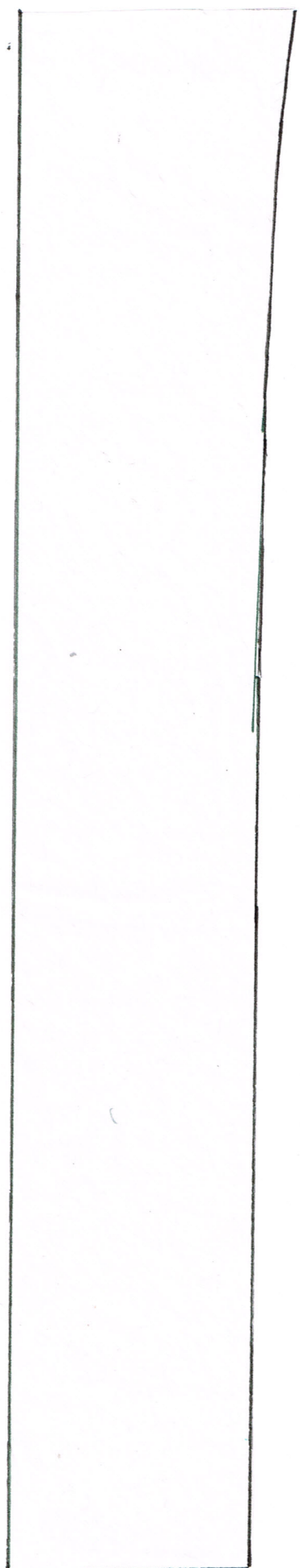
prise du haut milieu devant chat fig.

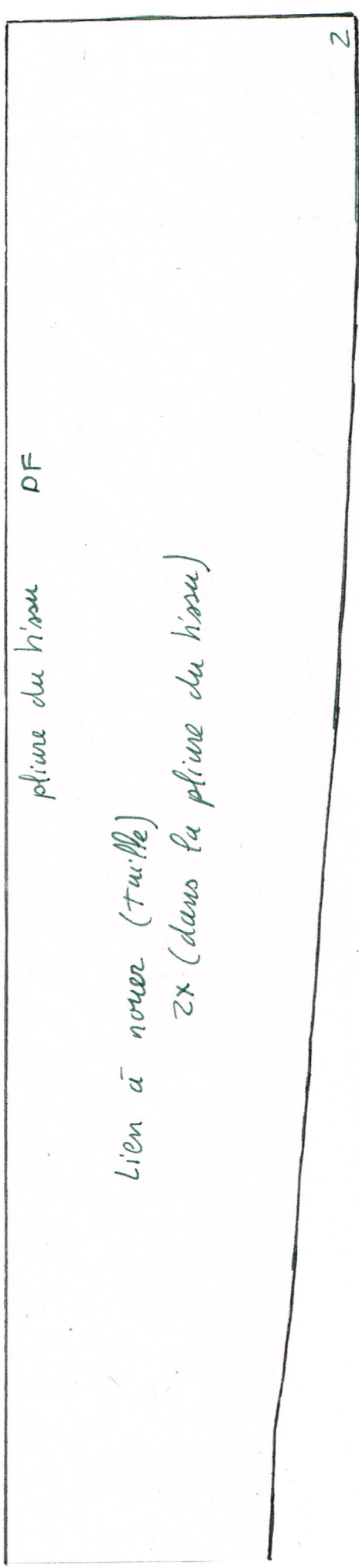
derant  
⊗ 1 dans plume  
du tissu





(3)





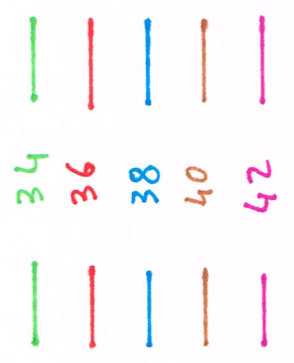
plume du tissu DF

Lien à nouer (Turle)

2x (dans la plume du tissu)

2

⊕ 1 coufine (biais, ruban, lacet...) de 55cm



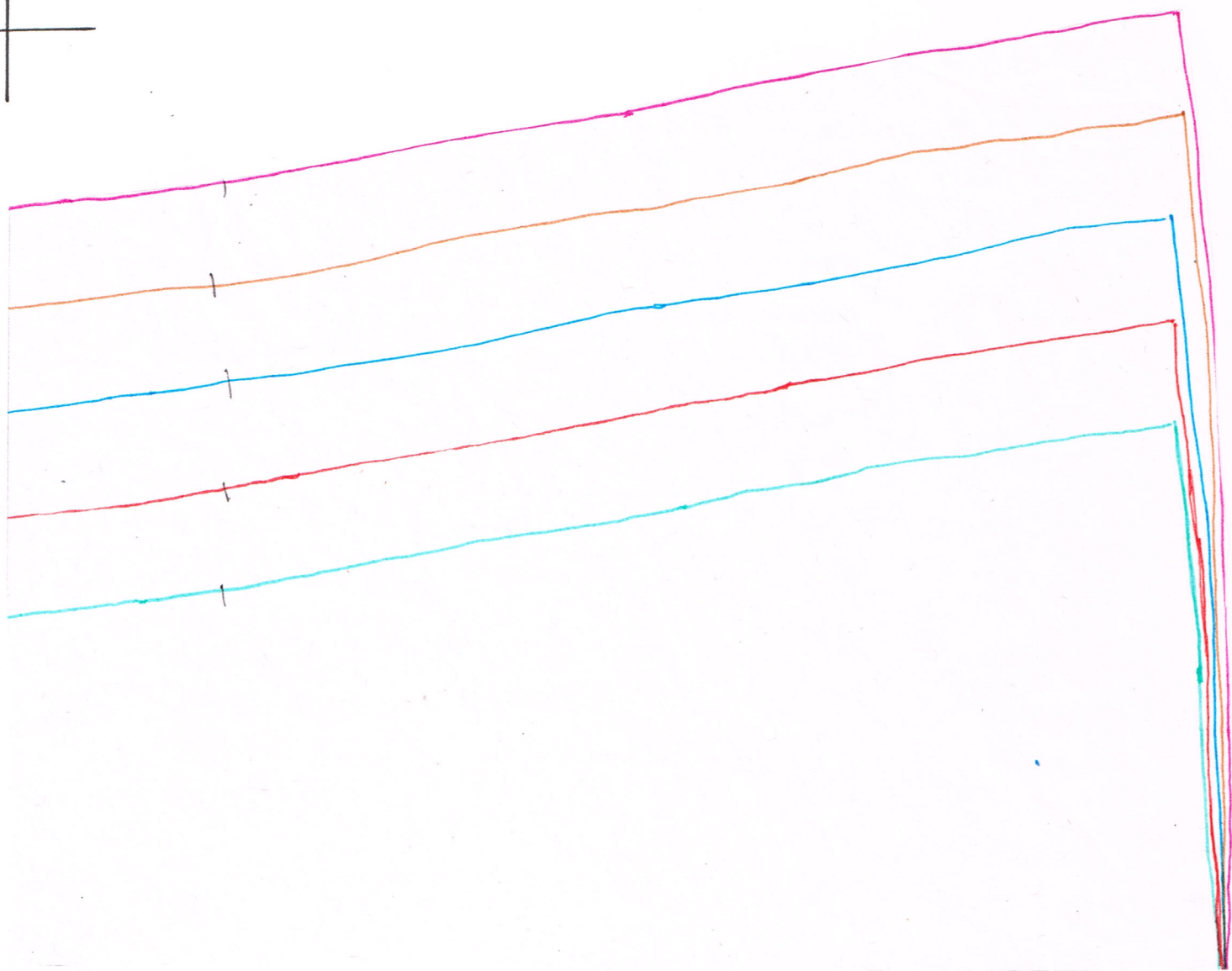
ⓕ

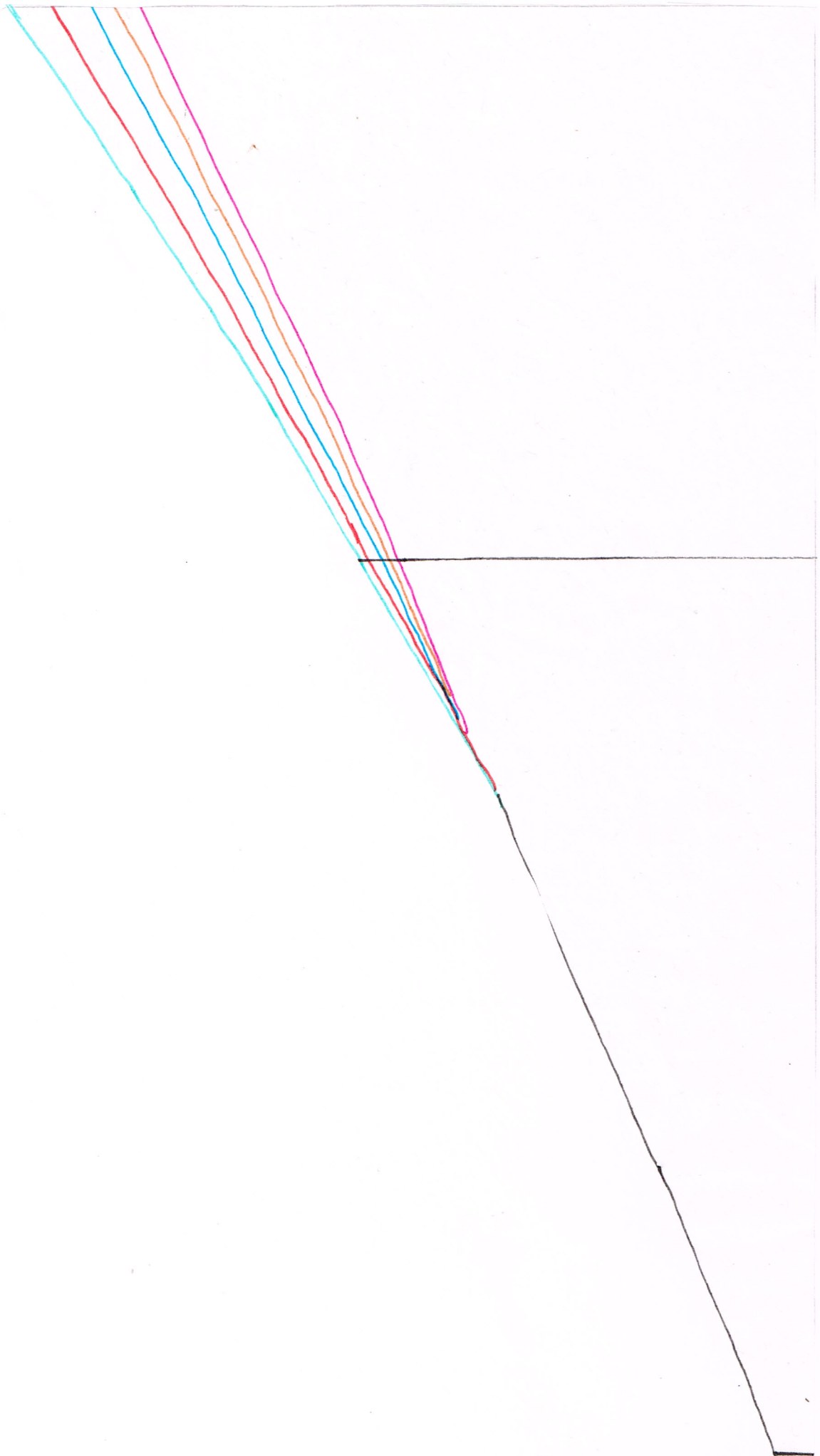


dos  
2x

DF

2





©



3	C	D
2	A	B
1	E	F

DOS

Lien à nouer

